



VALDESE

*Heavers*



1915

2015

---

**VALDESE WEAVERS  
100 YEARS**

# VALDESE WEAVERS, LLC



- Largest decorative textile manufacturer in North America
- ESOP ( Employee Stock Ownership Plan) Company
- Started in 1915
- Nearly 1,000 employees
- 93,000 sq. meters of Manufacturing Space
- Manufacturing of 55,000 meters per day/13.7 million meters per year
- €132 million Euros in annual sales



# BRANDS



VALDESE  WEAVERS  
CONTRACT



dicey fabrics



# BRANDS | Valdesse Weavers



Valdesse Weavers is the company's cornerstone brand, creating classic jacquards in a broad spectrum of price points for furniture manufacturers and fabric distributors worldwide.



# BRANDS | Valdese Weavers Contract



VALDESE  WEAVERS  
C O N T R A C T

Valdese Weavers Contract uses recycled fibers to create sustainable performance fabrics targeting commercial interiors.



# dacey fabrics

Dacey Fabrics, the newest brand to join the Valdese Weavers family, creates product for both the residential and contract markets. These durable fabrics feature a range of yarns and constructions that produce both performance plains and Jacquard designs with a lifestyle look. Its vertical integration, including yarn making, offers a competitive edge with this new acquisition.





Valdes International Products designs and imports specialty fabrics that complement the company's domestic line of decorative textiles.



# BRANDS | Home Fabrics

W E S L E Y   M A N C I N I

FOR

## HomeFabrics

Home Fabrics highly decorative textiles – created by the award-winning designer Wesley Mancini – range from moderate to luxury price points, and cater to a full spectrum of home furnishings clients.



# BRANDS | Circa 1801

*circa*  
1 8 0 1



Circa 1801 is Valdesse's boutique, fashion-driven fabric brand for residential furnishings. Its leading-edge designs are inspired by seasonal runways, and feature bright colors created with natural fibers.

# LEADERSHIP



**Michael Shelton**  
*President and CEO*



**Laura Levinson**  
*Chief Creative Officer*



**Blake Millinor**  
*Chief Sales and Marketing Officer*



**Carson Copeland**  
*Chief Operating Officer*



**Snyder Garrison**  
*Chief Financial Officer /  
Chief Administrative Officer*



**David Schmidt**  
*Vice President  
Market Development*



# FACILITIES



***Perkins Plant***  
Package Dyeing and Weaving



***Crescent Plant***  
Beam Dyeing, Warping And Slashing



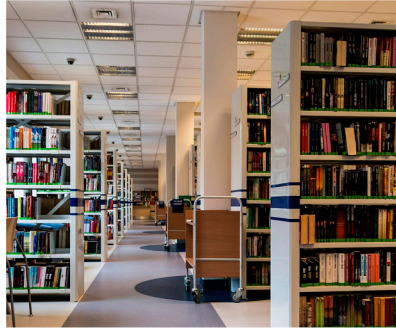
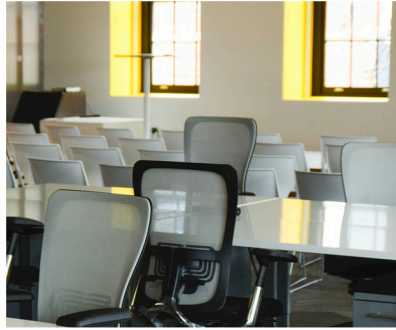
***Lovelady Plant***  
Finishing And Quality Assurance Testing, Distribution



***Circa Plant***  
Yarn Preparation



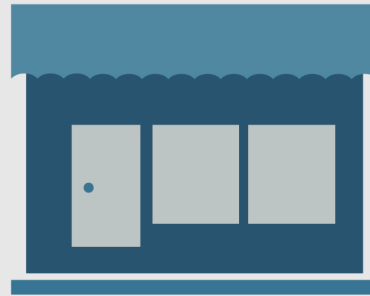
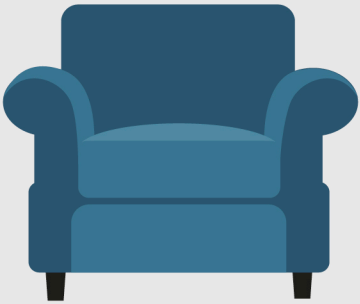
# MARKETS



- residential
- hospitality
- contract
- health care
- specialty
- education
- recreational vehicle
- marine
- apparel



# CHANNELS



- furnishing manufacturers
- fabric distributors and jobbers

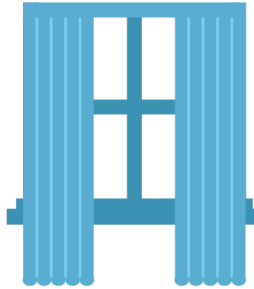
- furniture retailers
- OEM (Office Equipment Manufactures)



# PRODUCTS / APPLICATIONS



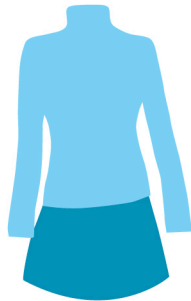
- upholstery



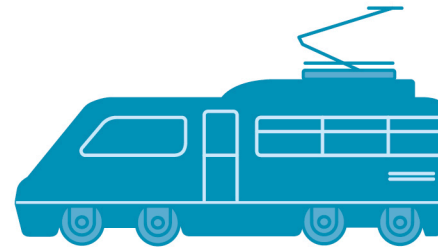
- drapery textiles



- wall/panel covering



- apparel



- rv (recreational vehicle) / marine seating

# MATERIALS | Raw Yarn Type



*Cotton*



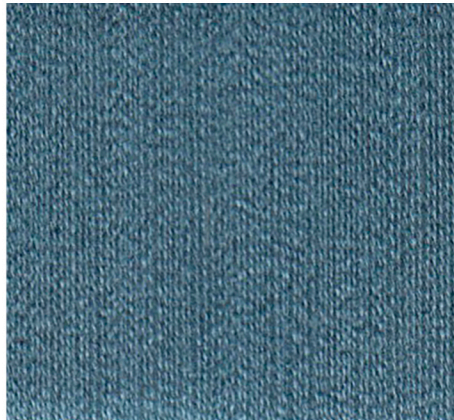
*Linen*



*Wool*



*Polyester/Recycled Polyester*



*Rayon/Viscose*



*Nylon/Polymide*



# PROCESS



# DESIGN PROWESS



**>40**

Full-time Fabric Designers



**>200,000**

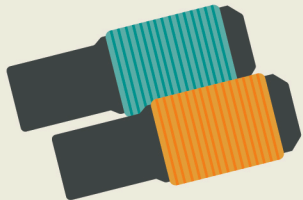
Active Fabric Patterns



Launch

**5,000+**

Designs / Year



**10,955**

Fill Colors



**987**

Warp Colors



**323**

Different Yarn Types



**778**

Finish Combinations



# CUSTOM CAPABILITIES



- Ability to customize pattern and color upon request



- One piece minimums for special developments

# INNOVATION & INVESTMENT



- Average 5% on capital expenditures
- Vertical manufacturing – all processes are controlled in house
- State of the art looms with an average speed of more than 550 RPM.

- World class, SAP operating system
- Vast archives  
(documents, arts, archived fabrics)



# PERFORMANCE & QUALITY



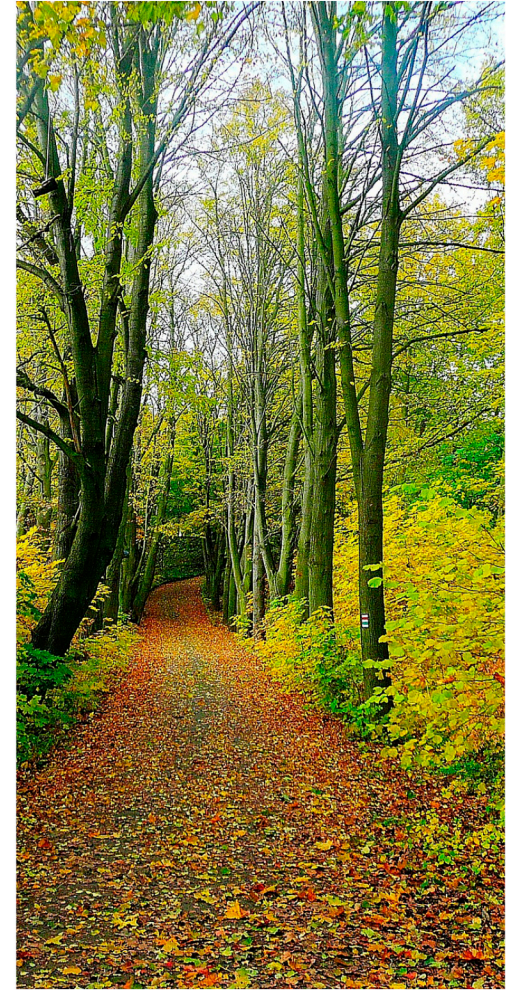
- All fabrics undergo extensive on-site testing from raw materials to the finished fabrics
- 15 specific quality check areas performing 100s of quality assurance tests

- ISO 9001 and SAP process controls
- Lean manufacturing (how we improve quality and performance; teams look at each process to see how we can best do things, constantly improving)



# ENVIRONMENTAL

- Our Recycled Polyester products achieve Silver and Gold NSF336 scores and are Silver Cradle to Cradle Certified from MBDC
- Our unique beam-dyeing technology ensures consistent quality and significantly less waste than package dyeing.
- Valdese Weavers returns water to municipal supply cleaner than it was obtained.
- Internal materials recycling (plastic cardboard, yard salvage, computer equipment, wood pallets)
- Valdese Weavers ships direct to the customer, eliminating hidden energy costs of warehousing and multi transportation efforts.



# AWARDS & CERTIFICATIONS



- ISO 9001 yearly certification since 2002 (maintain every year)
- Haworth Supplier of the Year 2014
- NAFDA (National Association of Decorative Fabrics Distributors), Associate of the Year award 2014
- ITMA (International Textile Market Association) Domestic Mill award
- DESIGN certification

# INTERNATIONAL BUSINESS DEVELOPMENT



***Reinhard Backhausen***

## **HEADQUARTER VALDESE WEAVERS / USA**

1000 Perkins Rd SE  
28690 Valdese  
North Carolina  
USA  
Tel: +1 (828) 874-2181  
[www.valdeseweavers.com](http://www.valdeseweavers.com)

## **EUROPE**

Reinhard Backhausen  
Obkirchergasse 36  
1190 Vienna  
Austria  
Tel: +43-1-932-32-32  
Mobile: +43-676-69-24-909  
Email: [rbackhausen@valdeseweavers.com](mailto:rbackhausen@valdeseweavers.com)

